



**ALASKA DIVISION OF HOMELAND  
SECURITY & EMERGENCY MANAGEMENT  
SITUATION REPORT  
25-049• February 18, 2025**



Toll-Free 1.800.478.2337

Anchorage Area 907.428.7000

SEOC 907.428.7100

<p><b><u>SEOC Preparedness Level</u></b> Level 1-Routine Operations</p>	<p><a href="http://ready.alaska.gov">http://ready.alaska.gov</a></p>	<p><b><u>National Terrorism Advisory System:</u></b>  <a href="#">Read the NTAS Bulletin here</a></p>
<p><b><u>Maritime Security (MARSEC)</u></b> Level:1- Minimum Appropriate Security Measures</p>	<p><b>WHO Novel Coronavirus Pandemic (COVID-19):</b> <a href="#">2019 Novel Coronavirus</a></p>	<p><b><u>Alaska Military Installation Force Protection</u></b>  <b><u>Level:</u></b> FPCON Bravo</p>

(Significant changes from previous situation reports are red.)

**Significant Issues:**

**NONE**

**Department of Health (DOH):**

For current information, see: <https://health.alaska.gov/dph/Pages/default.aspx>  
<https://health.alaska.gov/dph/Emergency/Pages/prepared/default.aspx>

**NTAS Bulletin:**

The U.S. Department of Homeland Security issued an updated National Terrorism Advisory Bulletin on May 24, 2023. The current and expired bulletins can be viewed at the below link.  
<https://www.dhs.gov/national-terrorism-advisory-system>

**Travel Alerts and Conditions:**

**Richardson HWY / Glacier Stream Bridge** - Highway is now open to traffic. Conditions are icy, please use caution while driving. Richardson HWY is closed at Valdez Glacier Stream bridge due to an accident. Unknown reopening timeframe. Please avoid the area.

For current driving conditions, dial 511 or visit: <https://511.alaska.gov/>

**Barry Arm Landslide / Tsunami Risk:**

For the latest information on the Barry Arm Landslide and Tsunami risk, click here:  
<https://dggs.alaska.gov/hazards/barry-arm-landslide.html>

**Earthquakes:**

United States Geological Service (USGS) Earthquake Information: <http://earthquake.usgs.gov/>  
National Tsunami Warning Center: <http://tsunami.gov/>

## Alaska Volcanoes:

**Great Sitkin** Alert Level: **Watch** and Aviation Color Code: **Orange**

**Mt. Spurr** Alert Level: **Advisory** and Aviation Color Code: **Yellow**

For Alaska Volcano updates, go to: <https://www.avo.alaska.edu/>

## Air Quality Index (AQI) Advisories:

For the most up-to-date Air Quality Index Advisories:

<http://dec.alaska.gov/Applications/Air/airtoolsweb/Home/Index>

## Spills of Oil and Hazardous Substances:

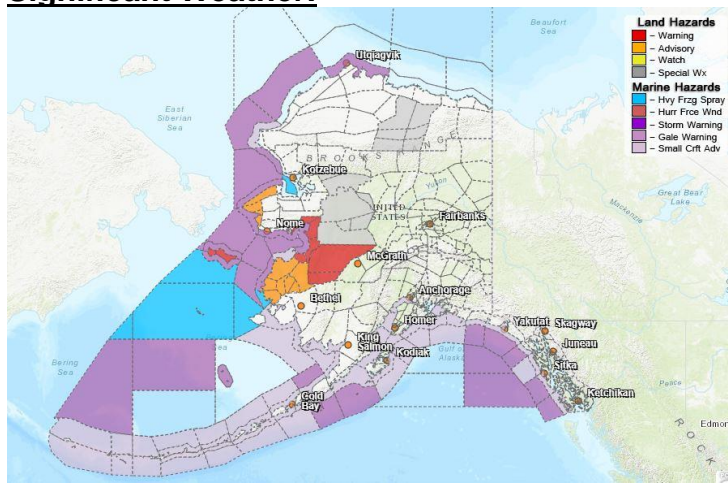
The Alaska Division of Environmental Conservation (ADEC) Spill Prevention and Response page is located at: <https://dec.alaska.gov/spar/>

## Alaska Cyber Security Information:

State Employees may sign up for cybersecurity notifications and alerts at:

<https://oit.alaska.gov/security>

## Significant Weather:



## Blizzard Warning:

- **Eastern Norton Sound and Nulato Hills** - In effect until 3 AM AKST Wednesday.
- **St. Lawrence Island** - In effect until 3 PM AKST Wednesday.

## Winter Storm Warning:

- **Lower Yukon and Innoko Valleys** - In effect until 3 PM AKST Wednesday.

## Special Weather Statements:

- **Central Arctic Plains and Central Brooks Range** - Snow expected through tonight.
- **Pribilof Islands** - Freezing drizzle this morning, followed by snow and reduced visibility this afternoon and evening.
- **Upper Kobuk Valleys, Lower Koyukuk Valley, and Middle Yukon Valley** - Moderate snowfall expected from Kaltag north to Ambler.

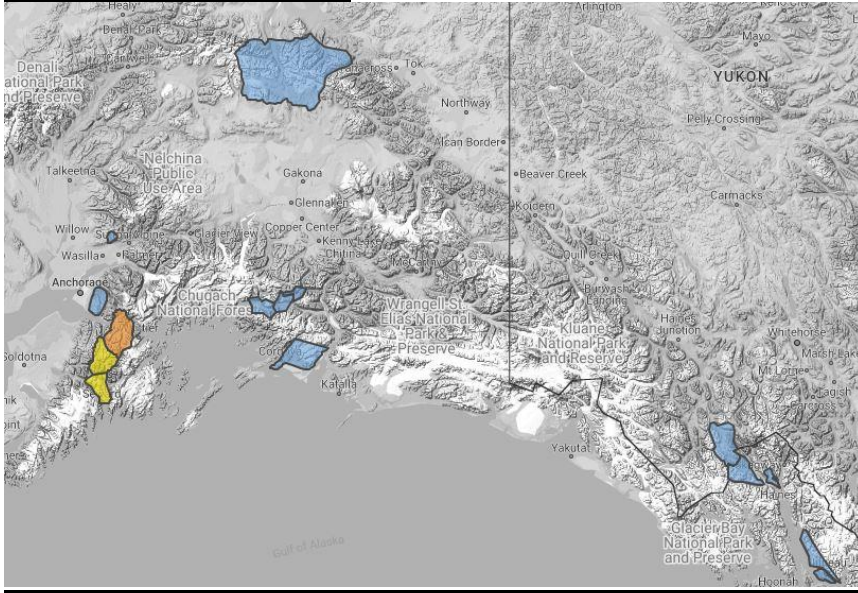
## Winter Weather Advisories:

- **Yukon Delta Coast** - In effect until 3:00 AM AKST Wednesday.
- **Bering Strait Coast, including Shishmaref** - In effect until 3:00 PM AKST Wednesday.

For more information and the most current weather, Watches / Warnings / Advisories go to:

<https://www.weather.gov/arh/>

## Avalanche Conditions:



**Summit Lake** – Low below 2,500', Moderate above 2,500'.

**Turnagain Pass** – Low below 1,000', Moderate above 1,000', Considerable above 2,500'

**Seward and Lost Lake** – Low below 2,500', Moderate above 2,500'.

**Valdez Maritime, Intermountain, and Continental -  
Hatcher Pass** –

For more information and the most current avalanche conditions, go to: <https://alaskasnow.org/>

**The Next Situation Report** will be on **February 19, 2025**. An interim report will be prompted by a significant change in the situation or the threat level. This report is posted on the internet at <https://ready.alaska.gov/sitrep>.

**To register for email distribution, PLEASE go to:**

<http://list.state.ak.us/mailman/listinfo/dhsem.situation.report>.

Direct questions regarding this report to the SEOC at 907-428-7100 or [seoc@alaska.gov](mailto:seoc@alaska.gov).